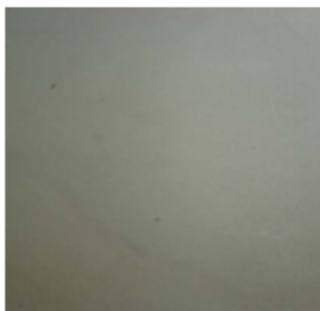


Cork Laying with WAKOL D 3540 Cork Contact Adhesive

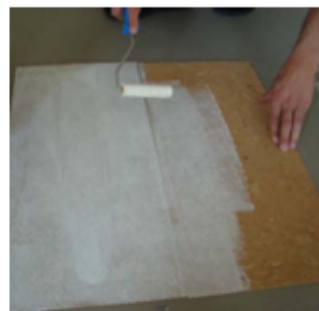
WAKOL®
Anspruch verbindet



1. Start with a smooth level and dust free cement based subfloor



2. Apply adhesive with shorthair velour roller on cork backing.



3. Apply adhesive evenly and fully to cork backing, forming a complete adhesive film. Avoid adhesive pools



4. Apply adhesive with shorthair velour roller on subfloor.



5. Apply adhesive evenly and fully to subfloor, forming a complete adhesive film. Avoid adhesive pools.



6. Wait until both adhesive films are dried and completely transparent.



7. Lay down the cork tiles to fit and knock tightly and completely with a rubber hammer to ensure a complete bond formation.



8. Lay down further cork tiles to fit and knock tightly with a rubber hammer.

The variety of materials used and the different construction site conditions, which lie beyond our control, preclude any claims based on this data. We therefore recommend making sufficient trials. Accompanying recommendations and regulations, flooring manufacturer's instructions and the current applicable codes must be observed. Please observe our usage advice in the Technical Information of our products. We gladly provide technical advice and written installing recommendations for concrete job sites. This recommendation supersedes all previous versions.